

ROLLER COATING/RELAG ESTIMATE FORM



Company _____
 Attention _____
 E-mail _____

Phone # _____
 Fax # _____
 Quote Due _____

COATING REQUIREMENTS

Color _____
 Thickness _____
 Durometer _____
 Food Grade Yes No
 Non-Marking Yes No

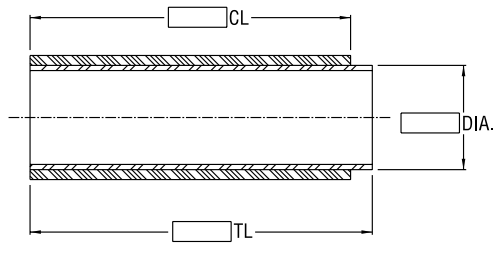
Coating Type

- Urethane Cast
- Urethane Millable
- Rubber - Neoprene
- Rubber - EPDM
- Rubber - Carboxylated Nitrile
- Rubber - SBR
- Spiral-Wrapped Belting
- Teflon
- Chrome Plating
- Nickel Plating
- Other _____

SUPPLIED ROLLER/TUBE INFORMATION

Tube

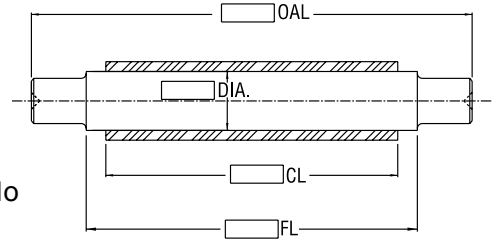
Tube Dia. _____
 Tube Length (TL) _____
 Coating Length (CL) _____
 Sprockets-Qty. _____
 Grooves-Qty. _____
 Quantity _____
 Coating currently on Yes No



tubes to be supplied unassembled less bearings, less axle

Solid Roller

Roller Dia _____
 Face Length _____
 Coating Length _____
 Over All Length _____
 Extension 1 Length _____
 Extension 2 Length _____
 Extensions Center-Drilled Yes No
 Quantity _____
 Coating currently on Yes No



Other Configuration

Quantity _____ Coating currently on Yes No

Description: _____

Special Instructions / Notes:

